

YOUR INVESTMENTS. YOUR RESULTS.

SIX MONTH REPORT FY 2016

Education

2809 participants
464 volunteers
3,808 hours



Education related grants:
\$165,449

Value of volunteer time =
\$87,851

Because of your generosity the current
return on investment for Education is
\$253,300

- 18 individuals earned their GED
- 21 obtained better jobs
- 60% of participants meet or exceed grade level for language arts, math, science & social studies
- 48% of participants are at or above grade level reading
- 85% of participants improved their reading skills

Income

1,074 participants
35 volunteers
488 hours



Income related grants:
\$136,431

Value of volunteer time =
\$11,258

Donations made by you have been
invested wisely. The current return on
investment for Income is **\$147,689**

- 860 Washington County residents called 2-1-1 for assistance; 94% received a referral to a local agency
- 80 individuals successfully participated in the expungement program
- Formed first community impact collaborative to include four partners to tackle financial literacy

Health



689 participants
507 volunteers
4,447 hours

Health related grants:
\$121,450

Value of volunteer time =
\$102,592

Donors like you make a difference.
The current return on investment
for Income is **\$224,042**

- 81 children served and 18 placed in permanent homes
- Eight new mentor matches for youth
- 13,170 meals served to home-bound individuals

Basic Needs

2,864 participants
570 volunteers
14,286 hours



Basic Needs related grants:
\$105,000

Value of volunteer time =
\$329,578

Donations are invested in programs helping
people from all walks of life. The current
return on investment for
Basic Needs is **\$434,578**

- 1,425 children received dental care
- 16,275 prescriptions dispensed
- 18 families/individuals received assistance to avoid eviction
- 59 individuals received assistance through on-site case management



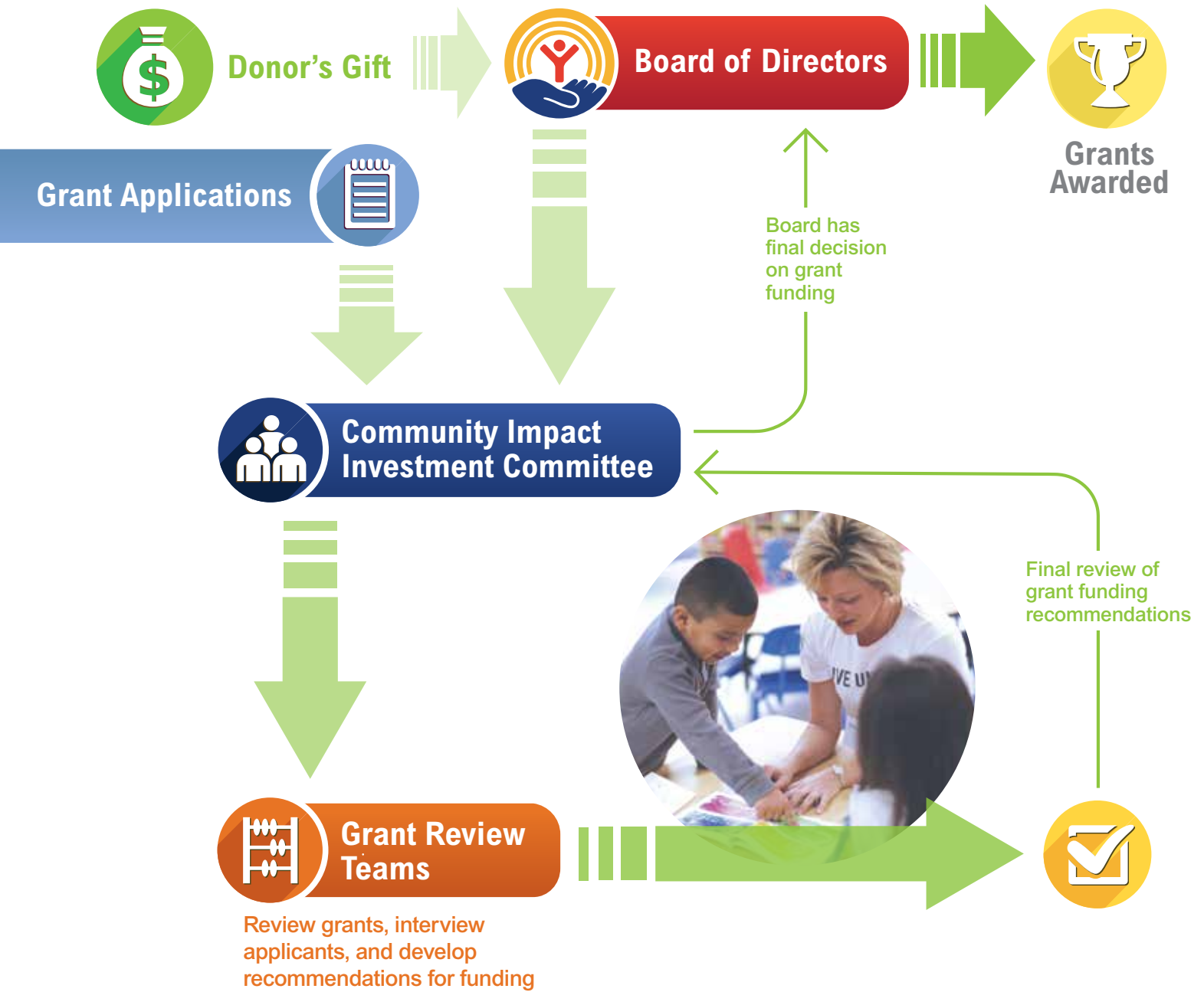
NEW
Summer Lead
& Learn
Program

- Focuses on building leaders for our future
- Participants, ages 11-15
- Two-week program includes learning from community leaders and hands-on projects

*One father said his kids
"...loved the small group like atmosphere and
made a lot of new friends which helped them
learn interaction and leadership skills outside
their typical circle of friends."*

COMMUNITY IMPACT FUNDING PROCESS

United Way uses current and relevant data, seeks advice from community leaders and experts who understand the different and varied human-related problems, then invests charitable gifts into improving our community. Funding focuses on programs that proactively tackle the cause of the problem it was created to address. This focused funding will lead to improving situations and changing lives.



United Way
of Washington County, MD

Visit our website for more information.
www.unitedwaywashcounty.org

33 W. Franklin Street, Suite 203
Hagerstown, MD 21740
(301) 739-8200